

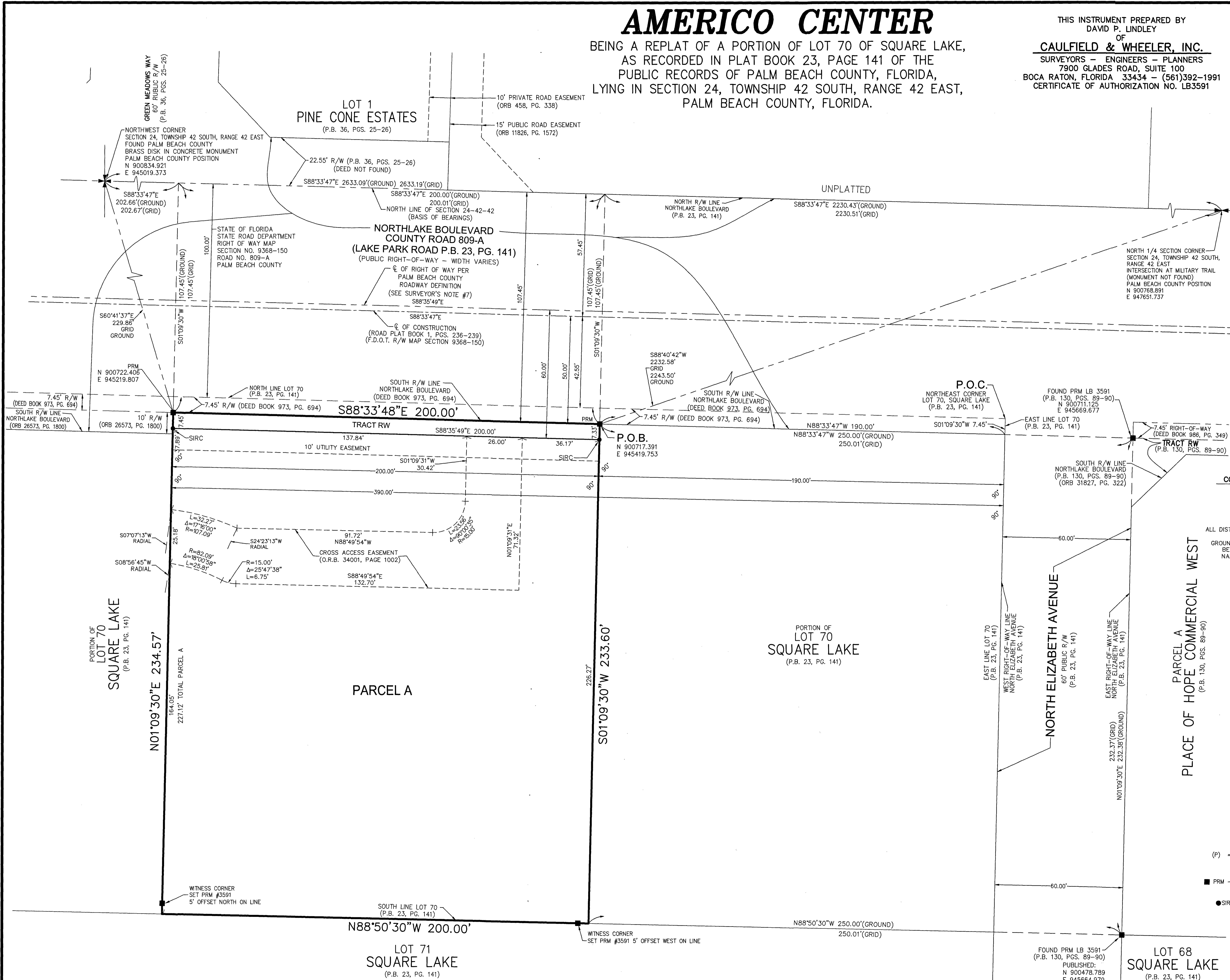
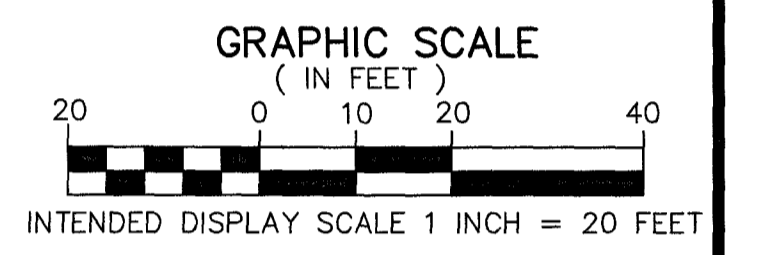
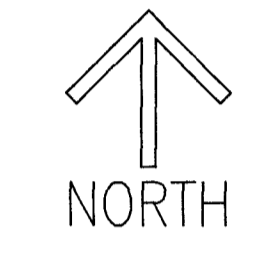
AMERICO CENTER

BEING A REPLAT OF A PORTION OF LOT 70 OF SQUARE LAKE,
AS RECORDED IN PLAT BOOK 23, PAGE 141 OF THE
PUBLIC RECORDS OF PALM BEACH COUNTY, FLORIDA,
LYING IN SECTION 24, TOWNSHIP 42 SOUTH, RANGE 42 EAST,
PALM BEACH COUNTY, FLORIDA.

THIS INSTRUMENT PREPARED BY
DAVID P. LINDLEY
OF
CAULFIELD & WHEELER, INC.
SURVEYORS - ENGINEERS - PLANNERS
7900 GLADES ROAD, SUITE 100
BOCA RATON, FLORIDA 33434 - (561)392-1991
CERTIFICATE OF AUTHORIZATION NO. LB3591



SHEET 2 OF 2



NOTES
COORDINATES, BEARINGS AND DISTANCES
COORDINATES SHOWN ARE GRID
DATUM = NAD 83 (90 ADJUSTMENT)
ZONE = FLORIDA EAST
LINEAR UNIT = US SURVEY FEET
COORDINATE SYSTEM 1983 STATE PLANE
TRANSVERSE MERCATOR PROJECTION
ALL DISTANCES ARE GROUND, UNLESS OTHERWISE NOTED
SCALE FACTOR = 1.00003771
GROUND DISTANCE X SCALE FACTOR = GRID DISTANCE
BEARINGS AS SHOWN HEREON ARE GRID DATUM,
NAD 83 (90 ADJUSTMENT), FLORIDA EAST ZONE.

LEGEND/ABBREVIATIONS:
C - CENTERLINE
E - EASTING (WHEN USED WITH COORDINATES)
F.D.O.T. - FLORIDA DEPARTMENT OF TRANSPORTATION
IRG - IRON ROD WITH CAP
LB - LICENSED BUSINESS
N - NORTHING (WHEN USED WITH COORDINATES)
O.R.B. - OFFICIAL RECORD BOOK
P.B. - PLAT BOOK
P.O.B. - POINT OF BEGINNING
P.O.C. - POINT OF COMMENCEMENT
PG(S). - PAGE(S)
(P) - DENOTES ROAD PLAT BOOK 1, PG. 236
PALM BEACH COUNTY RECORDS
R/W - RIGHT-OF-WAY
U.E. - UTILITY EASEMENT
■ PRM - DENOTES PERMANENT REFERENCE MONUMENT
4" x 4" x 24" CONCRETE MONUMENT WITH
ALUMINUM DISK STAMPED "C&W PRM LB3591"
● SIRC - DENOTES SET IRON ROD AND CAP
STAMPED LB#3591